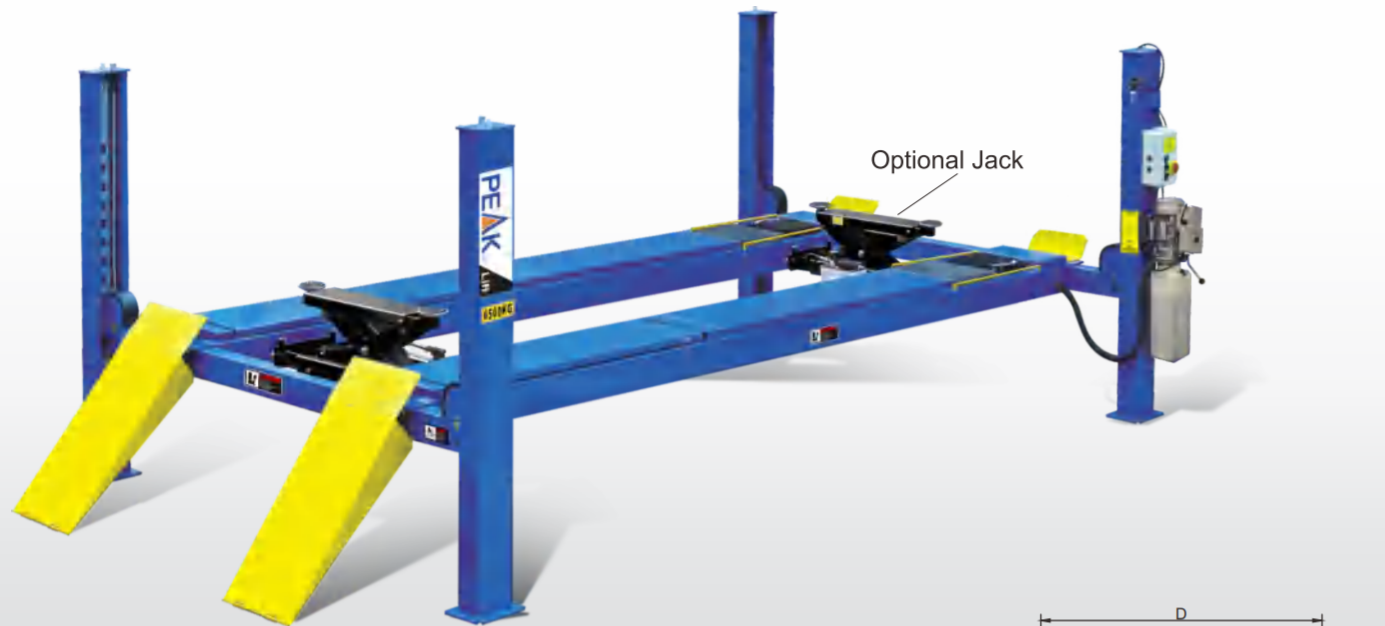
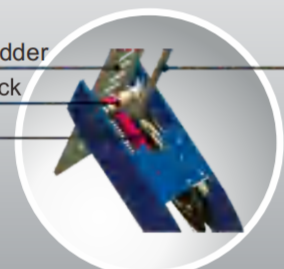


As another line of PEAK family, our four post lifts share the same name of quality, longevity, safety and with more flexible option.

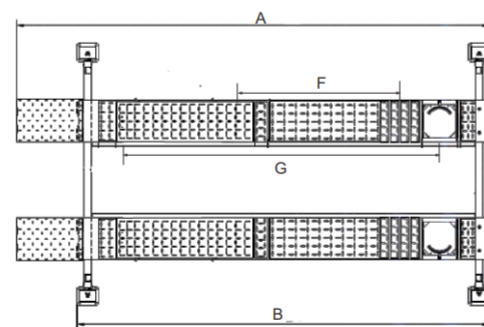
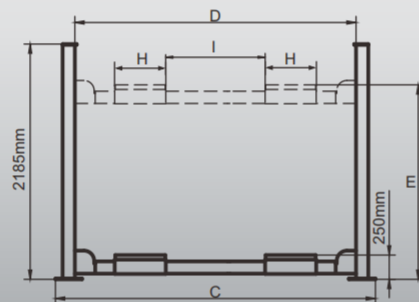


Optional Jack

Safety lock ladder  
The second safety lock  
The first safety lock



Double-safety locks



**FEATURES**

- Electric-air control operation system
- Mechanical self-lock and air-driven safety release
- Electrical hydraulic power system, cable-driven
- Skid proof diamond platform
- Two adjustable turntable positions to accommodate different wheel base
- Adjustable platform and adjustable safety lock ladders
- Dual safety device: In case the primary safety locks are out of operation, the lift would also be locked automatically by a second safety device

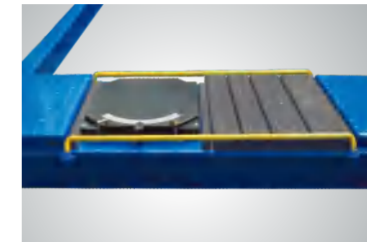
**SPECIFICATIONS**

Model	Lifting Capacity	Lifting Time	A	B	C	D	E	F	G	H	I	Gross Weight	Motor
			Overall Length (Inc. Ramps)	Overall Length (No Ramps)	Overall Width	Width Between Columns	Lifting Height	Min. Four wheel Align	Max. Four wheel Align	Runway width	Width between platforms		
414A	6.5T (14,000 lbs.)	76 Seconds	6528mm (257")	5500mm (216 1/2")	3324mm (130 7/8")	2946mm (116")	1915mm (75 3/8")	2350mm (92 1/2")	4310mm (169 5/8")	508mm (20")	Max. 1385mm (54 1/2")	1550kg (3,417 lbs)	4.0 HP
414AE	6.5T (14,000 lbs.)	76 Seconds	7252mm (285 1/2")	6224mm (245")	3324mm (130 7/8")	2946mm (116")	1915mm (75 3/8")	2350mm (92 1/2")	4310mm (169 5/8")	508mm (20")	Max. 1385mm (54 1/2")	1655kg (3,648 lbs)	4.0 HP
418A	8T (18,000 lbs.)	81 Seconds	7436mm (292 3/4")	6408mm (252 1/4")	3482mm (137 1/8")	3108mm (122 3/8")	1915mm (75 3/8")	2530mm (99 5/8")	4640mm (182 5/8")	558mm (22")	1302mm (51 1/4")	2019kg (4,451 lbs)	4.0 HP



**EXCLUSIVE FEATURE !**

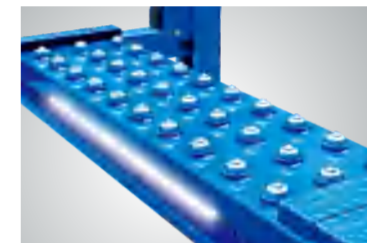
Electric control device With **UP**, **LOCK** and **DOWN** buttons  
With C.E. stop switch at 300 mm from ground and alarm tone when lowering down from 300 mm to ground make the lift more safety.



Adjustable turnplate blocks to fit various wheel bases vehicles.



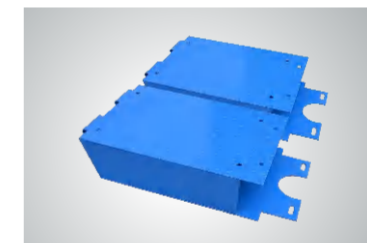
Oil-water separator and Solenoid air valve are installed on the power side column.



The 4-post LED Light kits is fitted for every model of PEAK 4-post lifts .  
Kits No.:40102002



**Optional Air Line Kits**  
All peak four post lifts are designed to use the air line kits for rolling jack.  
Kits No.:40102(414A/414AE)  
Kits No.:40106(418A)



Optional platform extension kit add 660mm/26"(41403) and 737mm/29"(41801) extra length to the platform.  
Kits No.:41403(414A 414AE)  
Kits No.:41801(418A)



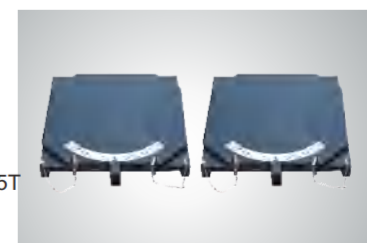
**Optional adjustable blocks for alignment 4 post lift.**  
Kits No.: 40905 (414A 414AE) (used with kits 41403)



**Optional adjustable blocks for alignment 4 post lift.**  
Kits No.: 41803(418A) (used with kits 41801)



**Optional Rolling Jacks**  
J6H: manual hydraulic type 2.8 T  
J6A: pneumatic hydraulic type 2.8 T  
RJ - 8A: pneumatic hydraulic type 3.5 T  
RJ-10A:pneumatic hydraulic type 4.5T



**Optional Turnplate**  
Each alignment lift need one set (two pcs.) of turnplates  
Kits No. :40101